

# ARTFUL LODGER

Our round-up of the best new hotels, from a dolled-up Georgian townhouse in Bath to Nobu's remodelled Miami Beach outpost

**15,000:** The number of lone earrings collected to form the 'Lost Earring' chandelier in one of the sitting rooms



**13:** Bespoke dolls' houses being made for the hotel. Twelve will be used to serve afternoon tea and one version will sit in the reception area

**1,200:** The length in metres of the corning that is being restored over the three townhouses



## Spring break

**NO.15 GREAT PULTENEY, BATH, UK**

Tourists have probably been flocking to Bath since before the Romans discovered hot springs in this bucolic nook in south-west England. So it's all the more surprising that it boasts so few truly great hotels. Until, that is, the recent arrival of The Gainsborough and now, hoteliers Ian and Christa Taylor's new property on Great Pulteney Street. Martin Hulbert Design has parsed its experience working on grand old manses like Coworth Park, The Grove and Barnsley House to convert three Grade 1-listed Georgian townhouses into a cosy 31-bedroom hotel complete with a coach house sporting original quatrefoil windows. In the public spaces and airy bedrooms, customised furniture is artfully mixed with Perspex pieces and murals by local artists, while hand-drawn frills and furbelows create *trompe-l'oeil* canopies for the four-poster beds. The most whimsical touch, though, is the afternoon tea hidden inside a handmade doll's house. **Daven Wu** 15 Great Pulteney Street, tel: 44.1225 807014, noi5greatpulteney.co.uk. Rates: from £150

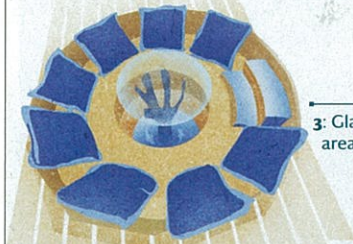
## Lagoon show

**SONEVA JANI, MALDIVES**

Soneva Resorts' newest opening is on the Maldivian island of Medhufaru, part of an uninhabited five-island cluster in the Noonu Atoll. It's a low-density offering with just 24 waterside villas, all set within a private lagoon and connected by a meandering walkway. Each villa features a private pool, a push-button retractable roof for star gazers, an over-water basket swing seat, and panoramic views of the Indian Ocean, while sustainable pine and teak lining both interiors and exteriors enhance the brand's commitment to keeping the environmental impact as low as possible. The on-site distractions include a dive centre, a spa, a silent over-water cinema (with Bluetooth earphones so as not to disturb nesting wildlife), and cheese and charcuterie rooms, but if it's all sounding a little too grown-up, guests can explore the 50 ice-cream flavours on offer or make the ultimate splash with the slides that shoot out from each villa into the surrounding waters. **Ella Marshall** Medhufaru Island, Noonu Atoll, tel: 960.656 6666, soneva.com; Rates: from \$1,870

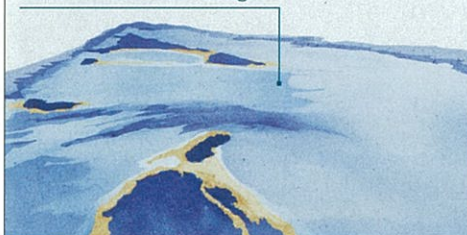


**23,520:** Hours it took to construct one villa



**3:** Glass-bottomed areas in each villa

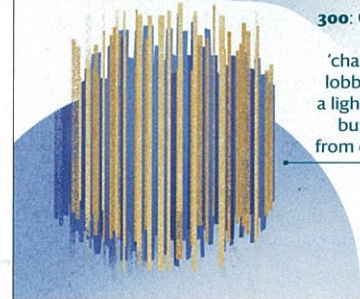
**7,168:** Olympic-sized pools that can fit into Soneva Jani's lagoon



**2,500:** The length in feet of handmade washi paper installations found throughout the hotel



**14:** Internally lit, woven abaca-wrapped columns, by Filipino artist Kenneth Cobonpue, featured in the restaurant



**300:** Cylinders that make up the 'chandelier' in the lobby bar. It is not a light source itself, but reflects light from other sources

## Return to Eden

**NOBU EDEN ROC, MIAMI BEACH**

Japanese chef Nobu recently unveiled his second US hotel, which takes up residence in the landmark 1950s Morris Lapidus-designed Eden Roc hotel. Fresh from a multi-million dollar renovation, the hotel's 210 rooms, public spaces, pool and restaurants have been designed by the Rockwell Group, who helped craft Nobu's style from the get-go. Lapidus' original lobby with 16-seat bar has been restored to its former glory, while a new metal and concrete reception desk, Moss & Lam artwork, and a white oak herringbone floor bring a sharp, contemporary edge to the space. Outside, a chic lounge and bar sits underneath a teak canopy and linen lanterns, making the most of the oceanfront views, while guest rooms are an amalgam of natural textures, decked out with Japanese paper lanterns and cerused oak millwork. Not to be outdone is the restaurant (the largest Nobu eatery in the world), which boasts a sushi bar, open kitchen, teppan room and private dining room. **Pei-Ru Keh** 4525 Collins Avenue, tel: 1.305 531 0000, nobuedenroc.com. Rates: from \$529